



Town of Greenwich

Community Hurricane Preparedness



General Hurricane Awareness Steps

The Town of Greenwich takes the following steps during hurricane season:

- Review the emergency operations plan
- Monitor any weather that might progress into a threat
- Communicate with community partners
 - Red Cross
 - Utilities



General Hurricane Awareness Steps

Similar steps that residents can take:

- Talk with household to have an evacuation plan in place
- Know how to secure your home
- Know where your house is located in relation to the flood plain and find your insurance policy



96 Hours to Landfall

Getting the house in order - Town

- Inventorying and maintaining all emergency response equipment
- Coordinating communications across departments and agencies
- Develop a staffing plan for storm and response



96 Hours to Landfall

Getting the house in order - Resident

- Prepare an emergency kit
- Review your households emergency plan
- Have a plan for your pet
- Monitor the news for breaking weather or evacuation information



72 Hours to Landfall

Ready to Execute – Town

- All shelters identified and inspected
- Overnight sleeping arrangements for 24-hour staffing opened
- Open Emergency Operations Center
 - Routine cross departmental and agency communications continue
- Monitor weather



72 Hours to Landfall

Ready to Execute – Resident

- Monitor Weather
- Unplug electrical appliances. Turn off natural gas appliances at the appliance if necessary
- Cover the windows.
- Protect your valuables; inventory all valuables
- Gather essential supplies and important papers.
- Fill your car's gas tank.



48 Hours to Landfall

Mobilization of Resources – Town

- Move equipment to higher ground
- Verify emergency staffing and cancel any scheduled time off
- Check catch basins
- Complete the transfer of relief aid to sheltering locations
- Continue to monitor the weather



48 Hours to Landfall

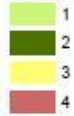
Mobilization of Resources – Resident

- Listen to local officials – *leave if told to do so.*
- If you are not advised to evacuate, stay indoors, away from windows.
- The worst part of the storm will happen once the eye passes over and the winds blow from the opposite direction.
- Be alert for tornadoes. Remain indoors, in the center of your home



LEGEND

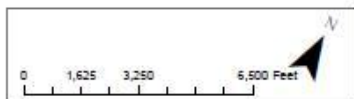
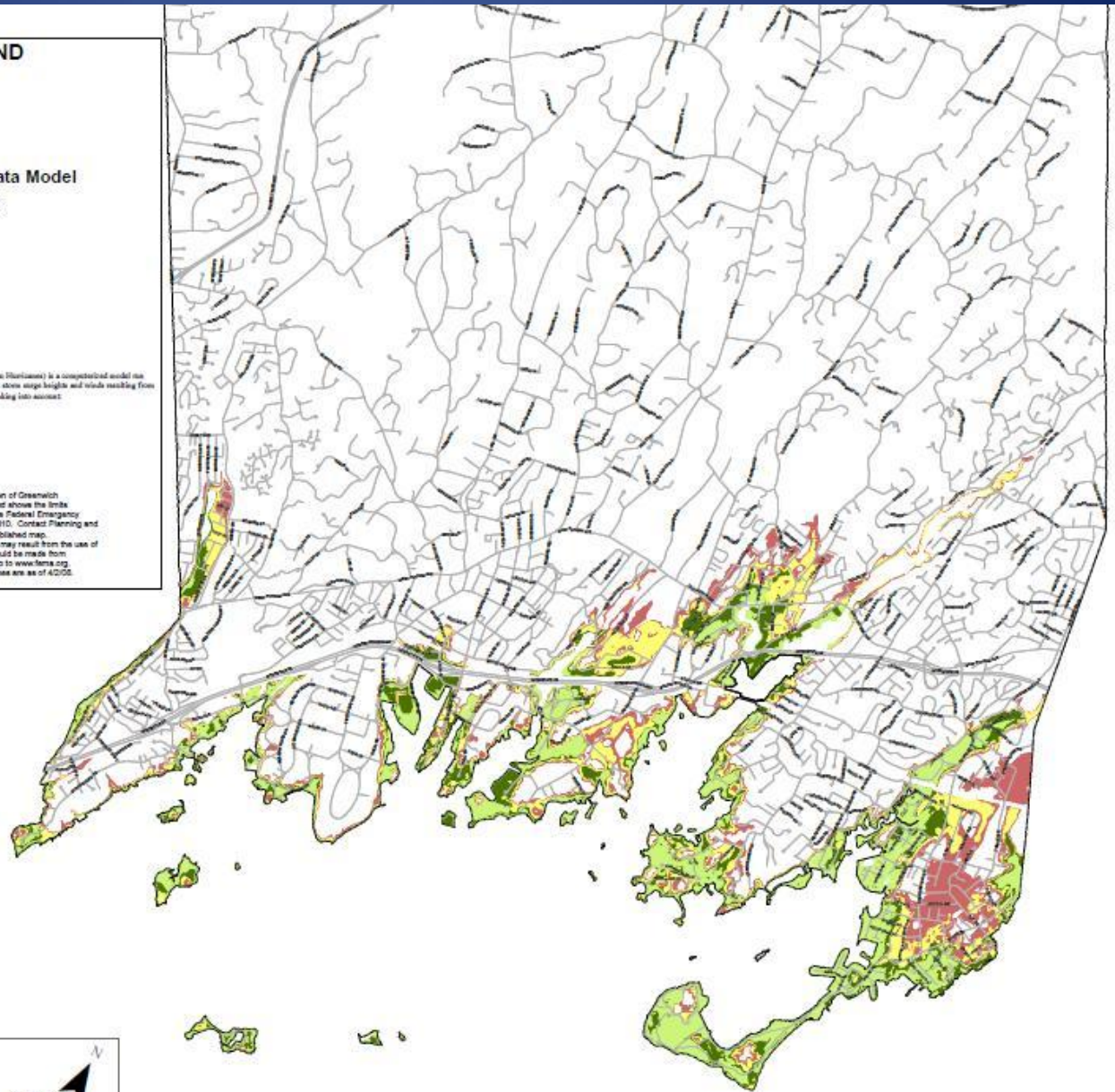
Hurricane SLOSH Data Model Hurricane Categories



* Note (SLOSH (Sea, Lake and Overland Surges from Hurricanes) is a computerized model run by the National Hurricane Center (NHC) to estimate storm surge heights and winds resulting from historical, hypothetical, or predicted hurricanes by taking into account:

- * Pressure
- * Size
- * Forward speed
- * Track
- * Wind

* Source Note: This map is a product of the Town of Greenwich Geographic Information System (TOG GIS) and shows the limits of the flood hazard zones as determined by the Federal Emergency Management Agency, FEMA as of June 15, 2010. Contact Planning and Zoning Department for amendments to the published map. TOG GIS expressly disclaims any liability that may result from the use of this map. Final flood zone determinations should be made from FEMA's Flood Insurance Rate Maps (FIRM) go to www.fema.org. Property lines are as of 10/1/05, building outlines are as of 4/2/05.



HURRICANE (SLOSH Model) Sea, Lake, and Overland Surges from Hurricanes



24 Hours to Landfall

Continue best practices – Town

- Meet in the Emergency Operations Center every 4 hours
- Continue to leverage Town resources in preparation of landfall, so long as it is safe
- Begin to field and respond to emergency service calls from residents



24 Hours to Landfall

Continue best practices – Resident

- Listen to NOAA Weather Radio or local radio or TV stations for evacuation instructions. ***If advised to evacuate, do so immediately, and;***
 - Keep your evacuation place telephone number handy, along with a road map
 - Take prescription medications and medical supplies, bedding and clothing, bottled water, battery-operated radio and extra batteries, first aid kit, flashlight, car keys and maps, and important papers.
 - Stay away from flood waters.



Landfall

Ensuring “Life and Safety” – Town

- When sustained winds are less than 50 mph:
 - Respond to emergency calls for service
 - Clear road ways and direct traffic
 - Continue to routinely coordinate in the Emergency Operations Center
 - Provide relief to those in need



Landfall

Ensuring “Life and Safety” – Resident

- Shelter in place until “all clear” is indicated by the Town



Aftermath

First steps toward normal – Town

- Continue to shelter and feed those residents in need
- Issue any health alerts that are applicable
- If winds are below 50 mph:
 - Continue to respond to emergency calls for service
 - Begin repairs on key infrastructure



Aftermath

First steps toward normal – Resident

- Return home when local officials tell you it is safe to do so.
- Inspect your home for damage.
- Use flashlights in the dark; do not use candles.
- Call your utility company if your service needs to be restored
- Catalog all damage



In Summary

- The Town and its partners are well prepared to respond to a severe weather event
- Residents have a responsibility to be equally prepared regarding their health and property
- Remember to take a preparedness hand book home with you tonight
- Consider volunteering



Thank You

- Commissioner Peter Boynton, CT DEMHS
- Bill Evans, WABC Meteorologist
- Tim Wall, American Red Cross
- Executive Director Charlee Tufts, GEMS
- Assistant Chief Robert Kick, GFD
- Captain Jim Heavey, GPD
- Dan Warzoha, Emergency Management Director
- Commissioner Amy Siebert, DPW
- Todd Blosser, CL+P Director of Division Operations
- Michael Vincelli, Emergency Coordinator
- First Selectman Peter J. Tesei