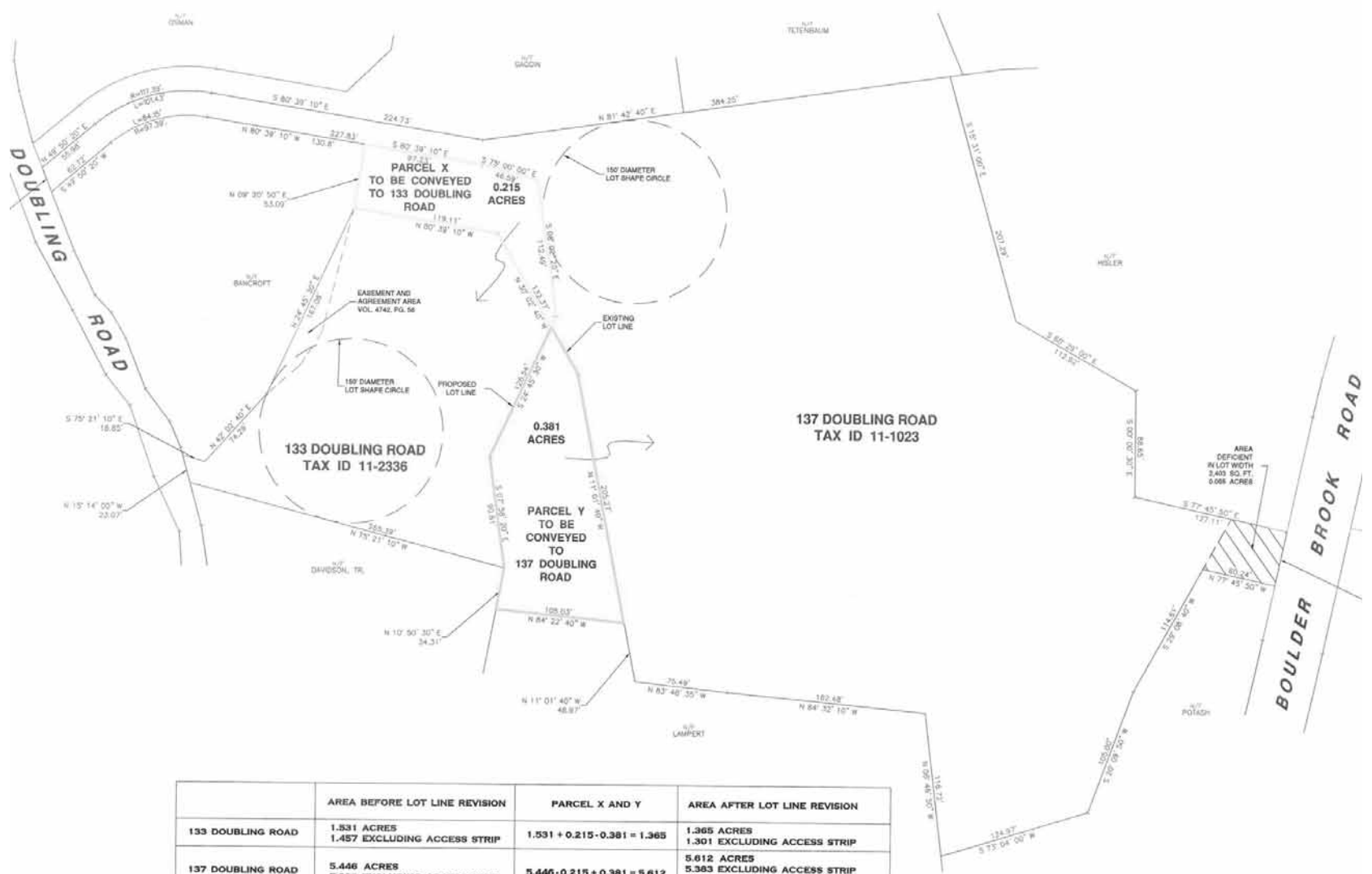


The Kaali-Nagy Company

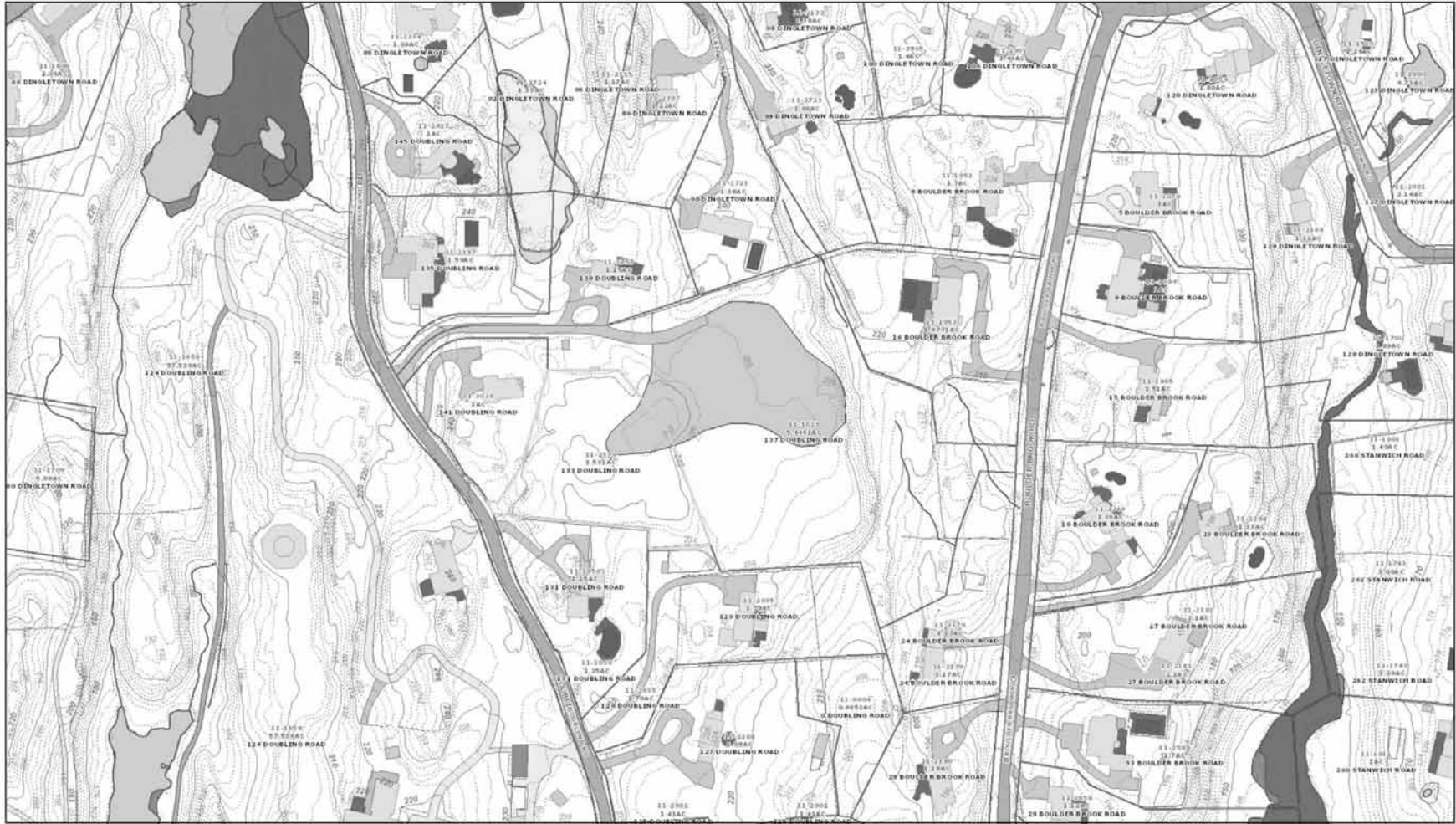
133-137 Doubling Hill Road

PLPZ 2022 00437

October 25, 2022



	AREA BEFORE LOT LINE REVISION	PARCEL X AND Y	AREA AFTER LOT LINE REVISION
133 DOUBLING ROAD	1.331 ACRES 1.457 EXCLUDING ACCESS STRIP	$1.531 + 0.215 - 0.381 = 1.365$	1.365 ACRES 1.301 EXCLUDING ACCESS STRIP
137 DOUBLING ROAD	5.446 ACRES 5.096 EXCLUDING ACCESS STRIP	$5.446 - 0.215 + 0.381 = 5.612$	5.612 ACRES 5.383 EXCLUDING ACCESS STRIP 5.328 EXCLUDING ACCESS STRIP AND AREA DEFICIENT IN LOT WIDTH



This map was produced from the Town of Greenwich Geographic Information System. The Town expressly disclaims any liability that may result from the use of this map.

Map Printed Date: 3/17/2022 10:12:33 Copyright © 2000 by the Town of Greenwich.

3/17/2022
 Scale: 1"=150'
 Scale is approximate





This map was produced from the Town of Greenwich Geographic Information System. The Town expressly disclaims any liability that may result from the use of this map.

Map Printed Date: 3/17/2022 10:16:21 Copyright © 2000 by the Town of Greenwich.

3/17/2022
 Scale: 1"=150'
 Scale is approximate

