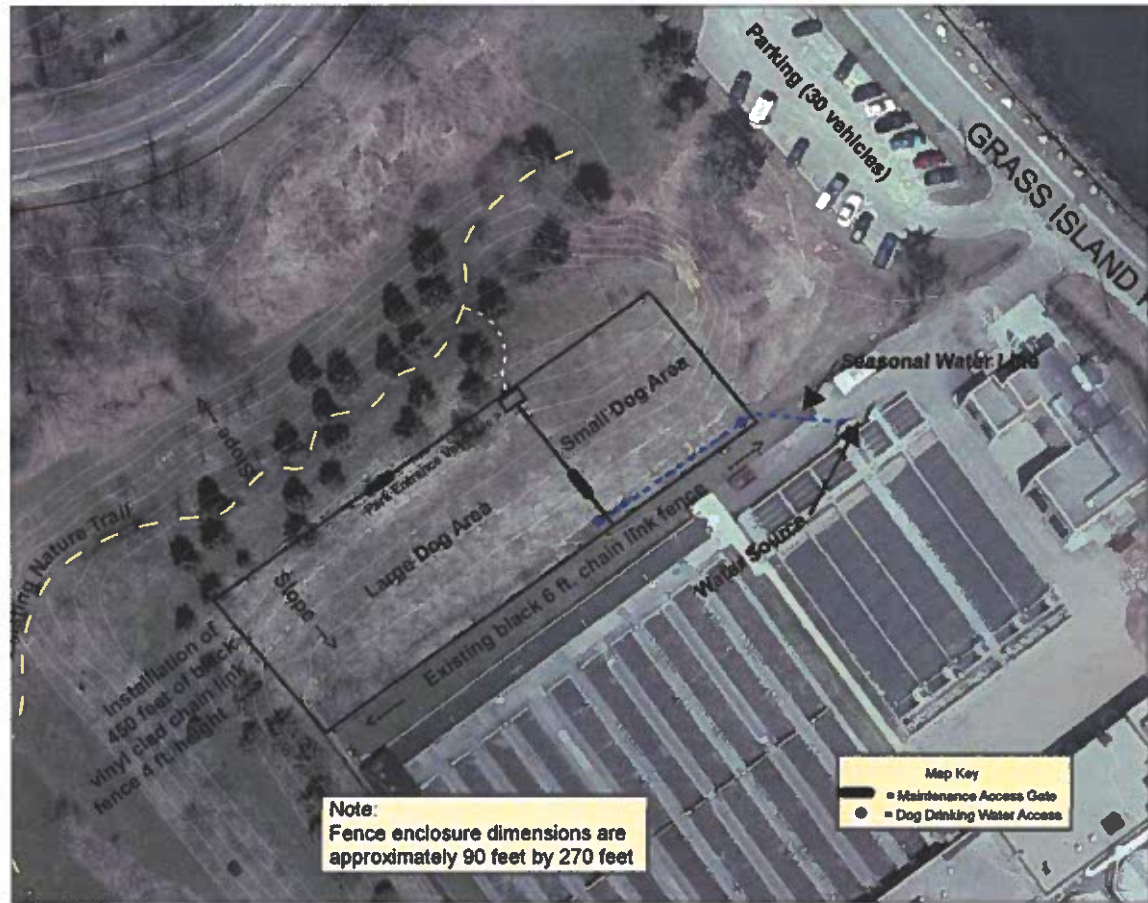


Grass Island
Dog Park
September, 2005



Note:
The Dog Park is to be run on a trial basis for one year, and that the site be monitored throughout the year by the Conservation Director and the Superintendents of Parks & Trees for the amount of use, vegetative cover condition, waste handling, noise and/or other environmental concerns.



PLAN OF GRASS ISLAND DOG PARK