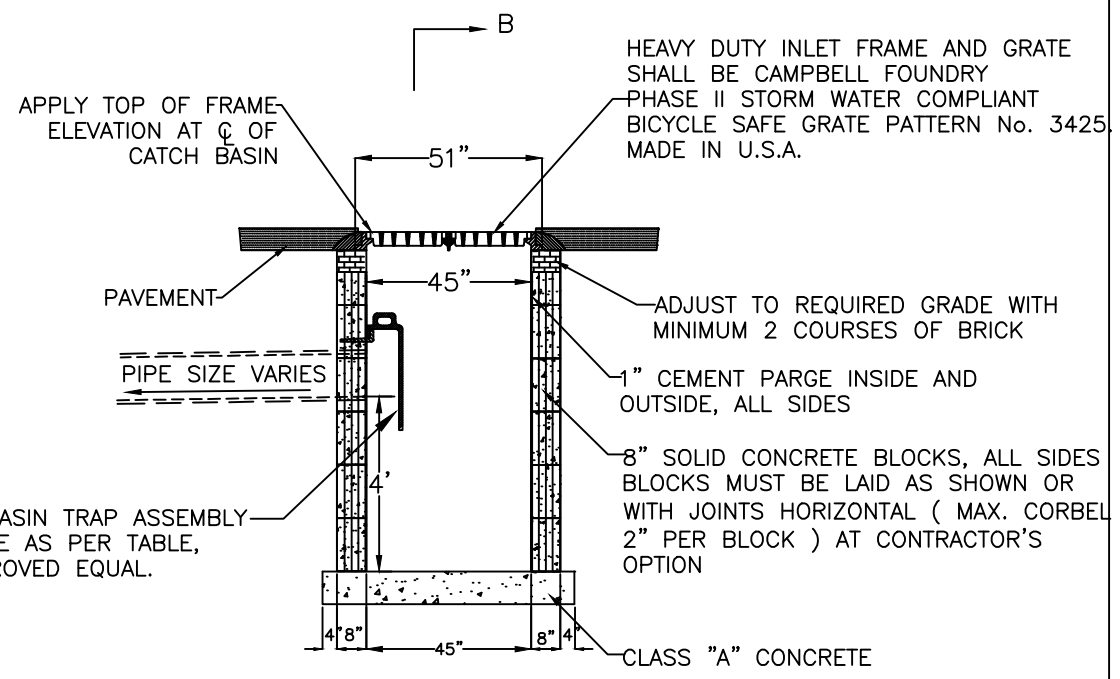


SECTIONAL ELEVATION B-B



SECTIONAL ELEVATION A-A

CATCH BASIN TRAP ASSEMBLY SHALL BE AS PER TABLE, OR APPROVED EQUAL.

TABLE FOR CATCH BASIN TRAP ASSEMBLY	
PIPE SIZE	CAMPBELL FOUNDRY PATTERN NUMBER
10"	2563
12"	2563
15"	2564
18"	2565

NOTES:

1. DIMENSION "A" SHALL BE CONSISTENT WITH THE INVERT ELEVATION SHOWN ON CONTRACT DRAWINGS. WHEN NO INVERT ELEVATION IS SPECIFIED, DIMENSION "A" SHALL BE ADEQUATE TO PROVIDE A MINIMUM OF 2'-0" OF COVER OVER PIPE.
2. INCREASE WALL THICKNESS TO 12" FOR THOSE PORTIONS OF WALL AT DEPTH GREATER THAN 8 FEET. INSIDE DIMENSIONS TO REMAIN THE SAME. FOOTING SIZE TO BE INCREASED 8" .

SCALE = N.T.S.

STANDARD CONSTRUCTION DETAIL

DOUBLE TYPE "C-1"

CURBLESS CONCRETE BLOCK

CATCH BASIN

TOWN OF GREENWICH, CONNECTICUT
ENGINEERING DIVISION
DEPARTMENT OF PUBLIC WORKS