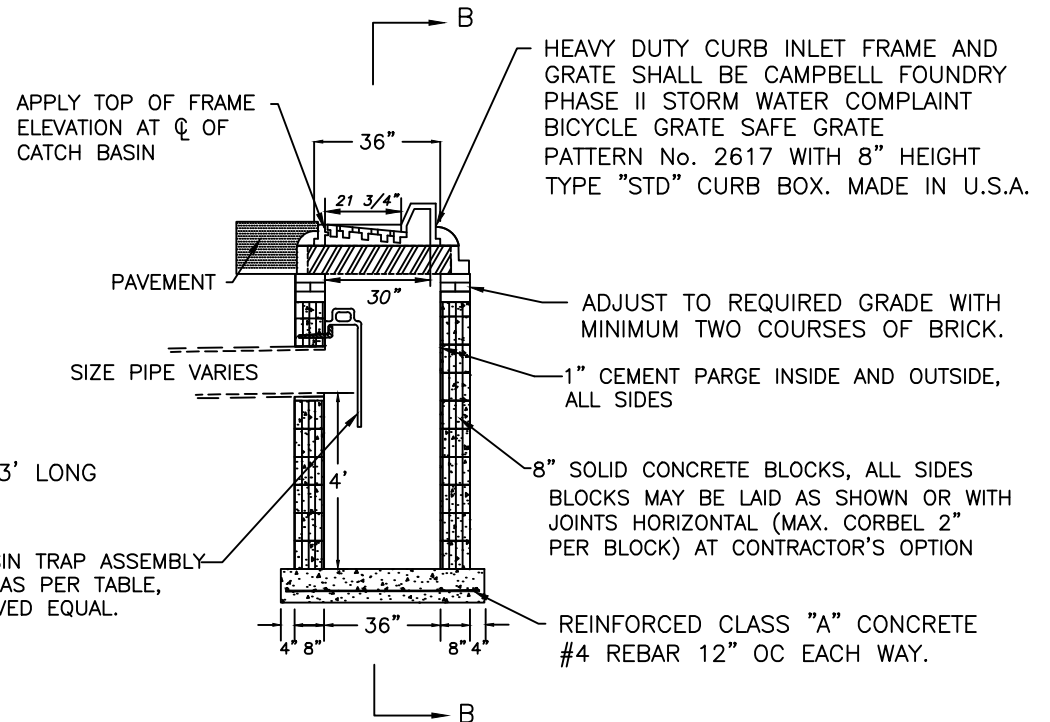


SECTIONAL ELEVATION B-B



SECTIONAL ELEVATION A-A

NOTES:

1. DIMENSION "A" SHALL BE CONSISTENT WITH THE INVERT ELEVATION SHOWN ON CONTRACT DRAWINGS. WHEN NO INVERT ELEVATION IS SPECIFIED DIMENSION "A" SHALL BE ADEQUATE TO PROVIDE A MINIMUM OF 2'-0" COVER OVER PIPE.
2. INCREASE WALL THICKNESS TO 12" FOR THOSE PORTIONS OF WALL AT DEPTHS GREATER THAN 8 FEET. INSIDE DIMENSIONS TO REMAIN THE SAME, FOOTING SIZE TO BE INCREASED 8".
3. W BEAM TO BE INCLUDED IN UNIT PRICE FOR DOUBLE CATCH BASIN. CATCH BASIN MAY BE PRECAST. CONTRACTORS SHALL SUBMIT DETAILED PLANS SHOWING SECTIONS, JOINTS, REINFORCING AND OTHER PERTINENT INFORMATION FOR APPROVAL.

TABLE FOR CATCH BASIN TRAP ASSEMBLY	
PIPE SIZE	CAMPBELL FOUNDRY PATTERN NUMBER
10"	2563
12"	2563
15"	2564
18"	2565

STANDARD CONSTRUCTION DETAIL

DOUBLE TYPE "C-1"  
CONCRETE BLOCK CATCH BASIN

TOWN OF GREENWICH, CONNECTICUT  
ENGINEERING DIVISION  
DEPARTMENT OF PUBLIC WORKS