

ZONING ENFORCEMENT OFFICE

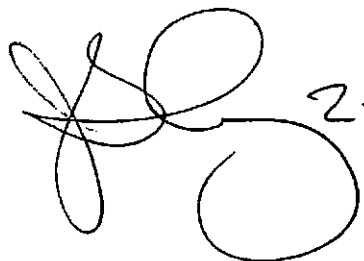


**TOWN OF GREENWICH
CONNECTICUT**

CUBIC VOLUME CALCULATION

In preparation of cubic volume calculation (Section 6-101(a)) use the following simple guideline:

Include all solids above the grade plane. Measure to the outside surface of all solids (walls, roofs, chimneys, etc.). COLUMNS, RAILINGS, WOOD OR BRICK PATIOS CONNECTED TO HOUSE, ALL SOLIDS ABOVE GRADE ON THE PROPERTY.

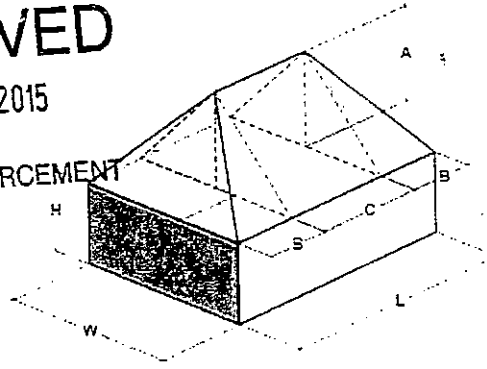
 ZEO Jan. 1. 2008

Reyes Residence
141 Taconic Road
Greenwich, CT

RECEIVED

NOV 09 2015

ZONING ENFORCEMENT



David Clark
OK

Volume Calculation

Dimension (ft)	L	W	H	A	B	C	Volume (cu ft)
----------------	---	---	---	---	---	---	----------------

reference	MAIN HOUSE	L	W	H	A	B	C	Volume (cu ft)
fig. 2.2	section A		28.70		11.80		43.8	7417.80
fig. 2.2	section A	43.80	28.70	20.80				27462.40
fig. 2.3	section A	30.50		9.80	14.40	2.4		951.40
fig. 2.3	section B	30.50	2.40	2.00				73.30
fig. 2.4	section C		30.50		9.70		16.70	2478.20
fig. 2.4	section C	16.70	30.50	22.30				11819.10
fig. 2.5	section D		28.30		10.70		32.20	4870.40
fig. 2.5	section D	32.20	28.30	22.70				20658.80
fig. 2.6	section E	29.60			11.30	19.6		3298.20
fig. 2.6	section E	29.60	19.60	21.10				12272.00
fig. 3.1	section F1	10.90			0.70			10.70
fig. 3.2	section F2	10.60	8.70	9.80	11.90			204.40
fig. 3.3	section F3	12.80	8.10		1.60			21.30
fig. 3.4	section F4	6.60	12.00		9.30			142.10
fig. 3.5	section F5		10.90	10.70	12.00			10.70
fig. 3.6	section F6	23.80	19.70	6.00	0.70		14.80	243.20
fig. 3.7	section G	38.30			11.30		29.8	6548.30
fig. 3.7	section G	38.80	29.80	21.10				24364.50
fig. 4.2	front entry- steps	2.70	4.40	0.50			1.00	4.60
fig. 4.2	front entry- steps	2.70	4.40	1.00			1.00	8.20
fig. 4.2	front entry- steps	2.70	4.40	1.50			1.00	12.30
fig. 4.2	front entry- steps	2.70	4.40	2.00			1.00	16.40
fig. 4.2	front entry- steps	2.70	4.40	0.50			1.00	4.60
fig. 4.2	front entry- steps	2.70	4.40	1.00			1.00	8.20
fig. 4.2	front entry- steps	2.70	4.40	1.50			1.00	12.30
fig. 4.2	front entry- steps	2.70	4.40	2.00			1.00	16.40
fig. 4.2	front entry- steps	0.90	6.40	0.50			4.60	2.70
fig. 4.2	front entry- steps	8.80	6.00	2.80				148.70
fig. 4.2	front entry- column		0.70	8.40				2.90
fig. 4.2	front entry- column		0.70	8.40				2.90
fig. 4.2	front entry- roof		8.40		2.00		6.00	50.10
fig. 4.2	front entry- roof	6.00	8.40	2.30				115.40
fig. 4.2	front entry- roof	6.00	6.70	1.50				-47.60
fig. 4.3	dormer 1	5.40	10.00		3.80			85.70
fig. 4.3	dormer 1	8.50	3.80	0.70				17.20
fig. 4.3	dormer 1	5.40	10.00		3.80			85.70
fig. 4.3	dormer 1	8.50	3.80	0.70				17.20
fig. 4.3	dormer 1	5.40	10.00		3.80			85.70
fig. 4.3	dormer 1	8.50	3.80	0.70				17.20
fig. 5.2	chimney 1	4.00	4.00	7.10				57.20
fig. 5.2	chimney 1	4.90	2.00		2.70			10.80
fig. 5.3	chimney 2	4.00	2.00	5.50				43.90
fig. 5.3	chimney 2	4.80	2.00		2.70			10.80
fig. 5.4	chimney 3	2.60	5.90	7.00				106.30

fig. 5.4	chimney 3	2.60	4.70		3.00	14.20
fig. 5.4	chimney 3	2.60	2.90		1.80	5.20
fig. 6.1	dormer 2		2.20	8.00	1.80	15.60
fig. 6.1	dormer 2		2.20	8.00	1.80	15.60
fig. 6.1	dormer 2	1.80	3.40	8.00		47.60
fig. 6.1	dormer 2	2.10	3.20	0.40		1.00
fig. 6.1	dormer 2	2.10	3.20	0.40		1.00
fig. 6.1	dormer 2	1.80	2.80		0.40	0.30
fig. 6.1	dormer 2	1.80	2.80		0.40	0.30
fig. 6.1	dormer 2	3.50	0.70	0.40	0.60	2.00
fig. 6.1	dormer 2	3.30	1.80	0.30	0.60	0.70
fig. 6.1	dormer 2	3.50	3.10	0.50	0.90	2.30
fig. 6.1	dormer 2	3.50	3.10	0.50	0.90	2.30
fig. 6.1	dormer 2	2.00	2.70	0.50	0.90	2.10
fig. 6.1	dormer 2	2.00	2.70	0.50	0.90	2.10
fig. 6.2	dormer 3	4.70	7.90		3.80	53.80
fig. 6.2	dormer 3	6.50	3.80	0.70		13.50
fig. 6.2	dormer 3	4.70	7.90		3.80	53.80
fig. 6.2	dormer 3	6.50	3.80	0.70		13.50
fig. 6.2	dormer 3	3.50	0.70	10.40		27.20
fig. 6.3	back entry	3.50	0.70	10.40		27.20
fig. 6.3	back entry	3.50	9.60	0.70		25.10
fig. 6.4	balcony	41.20	4.00	0.70		110.00
fig. 7.2	porch steps	10.60	28.30	2.80		849.20
fig. 7.2	porch steps	1.10	28.30	2.10		67.80
fig. 7.2	porch steps	1.10	28.30	1.40		45.30
fig. 7.2	porch steps	1.10	28.30	0.70		22.70
fig. 7.3	porch roof	10.60	28.30	0.80		249.90
fig. 7.4	column	0.80	0.80	9.00		6.30
fig. 7.4	column	0.80	0.80	9.00		6.30
fig. 7.4	column	0.80	0.80	9.00		6.30
fig. 7.4	column	0.80	0.80	9.00		6.30

subtotal 125439.10

Garage Addition

fig. 8.2	garage	37.80	24.00	15.20		13815.80
fig. 8.2	garage	37.80	24.00		8.80	3964.10
fig. 8.3	mudroom	6.30	11.50	10.30		1493.40
fig. 8.3	mudroom	6.30	11.50	10.30		1493.40
fig. 8.3	mudroom	11.30	7.70	10.30		890.80
fig. 8.3	mudroom- step	11.30	2.80	0.80		25.30
fig. 8.3	mudroom- step	11.30	1.00	0.70		8.10
fig. 8.4	mudroom- roof	24.00	28.50	0.90		626.10

subtotal 22317.00

TOTAL VOLUME	147756.10
---------------------	------------------

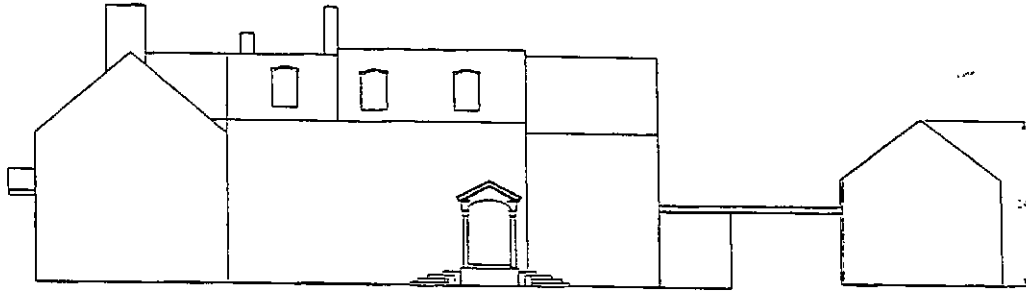


fig. 1.1- main house elevation
scale: =1" = 20'-0"

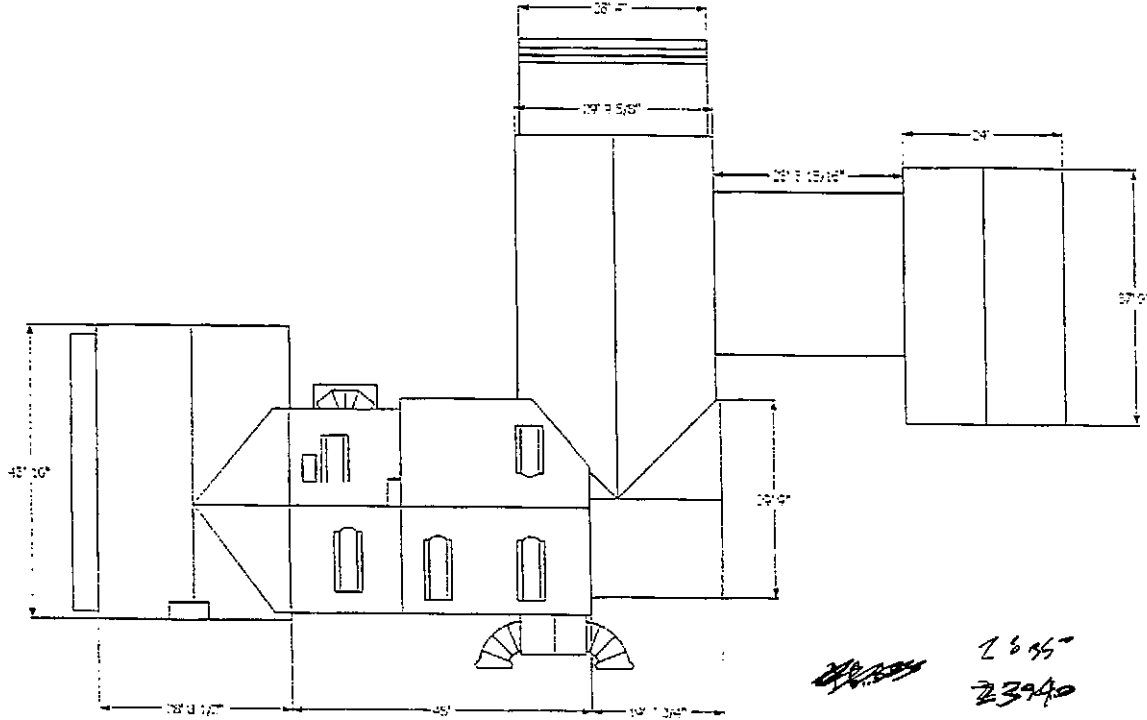


fig. 1.2- main house plan
scale: =1" = 20'-0"

912
13680
8200
21880

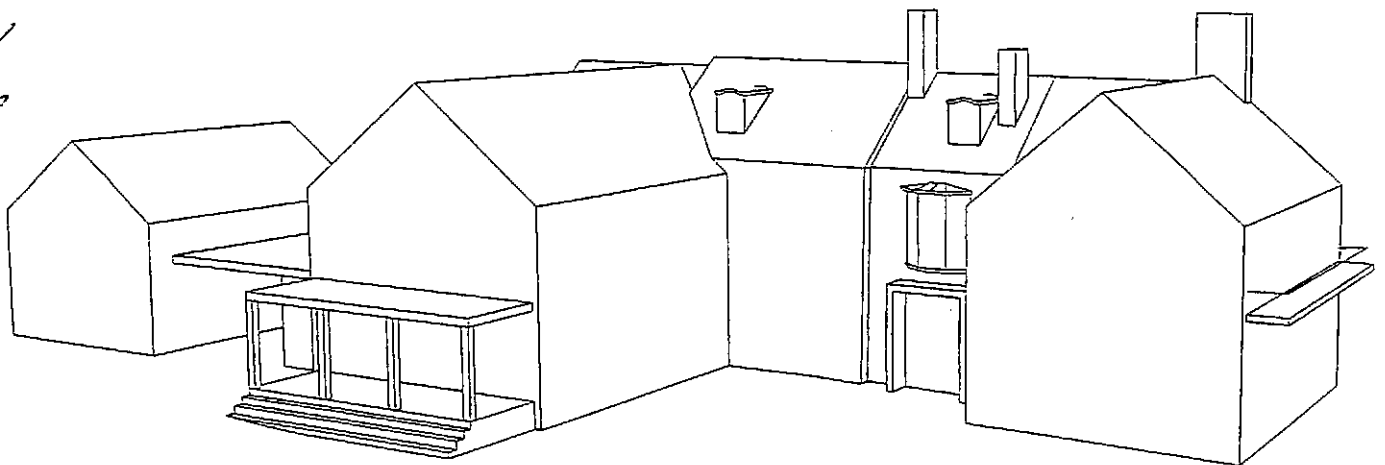


fig. 1.3- main house massing
not to scale

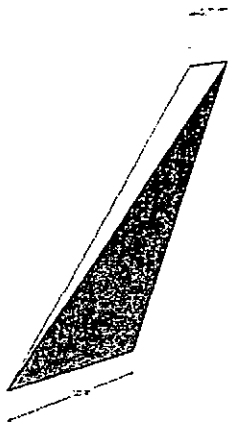


fig. 3.1- main house section F1
not to scale

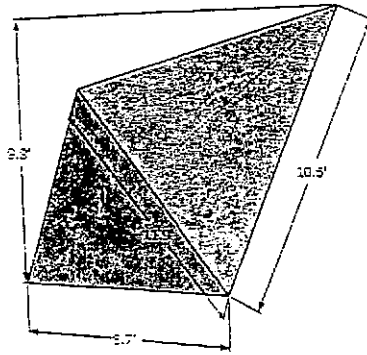


fig. 3.2- main house section F2
not to scale

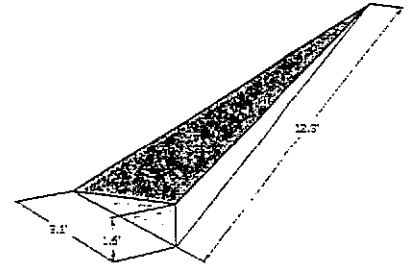


fig. 3.3- main house section F3
not to scale

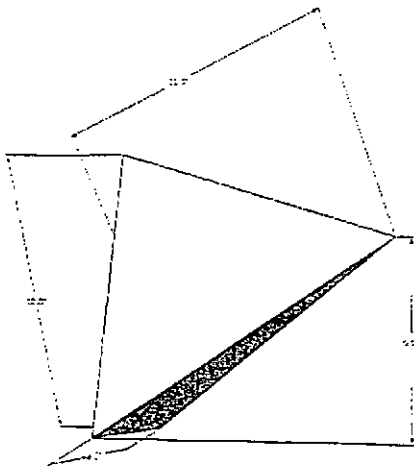


fig. 3.4- main house section F4
not to scale

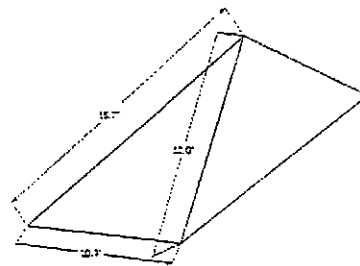


fig. 3.5 main house section F5
not to scale

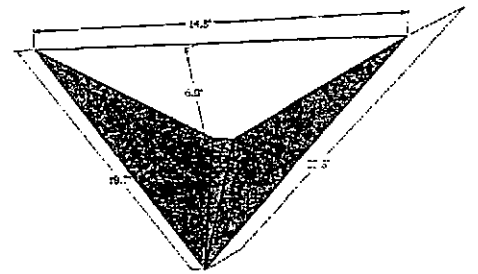


fig. 3.6- main house section F6
not to scale

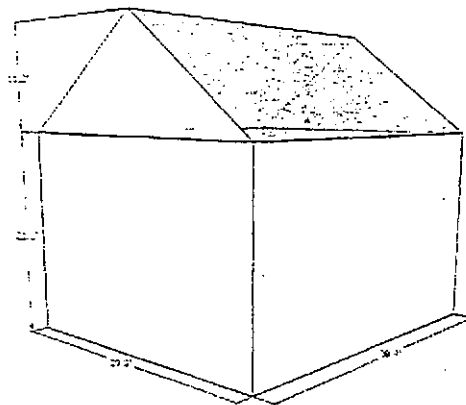


fig. 3.7- main house section G
not to scale

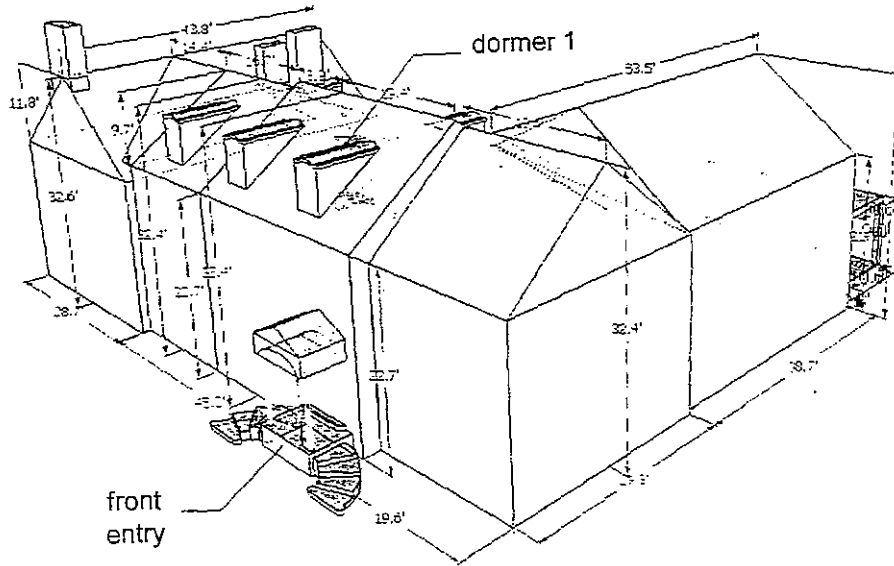


fig. 4.1- front massing
not to scale

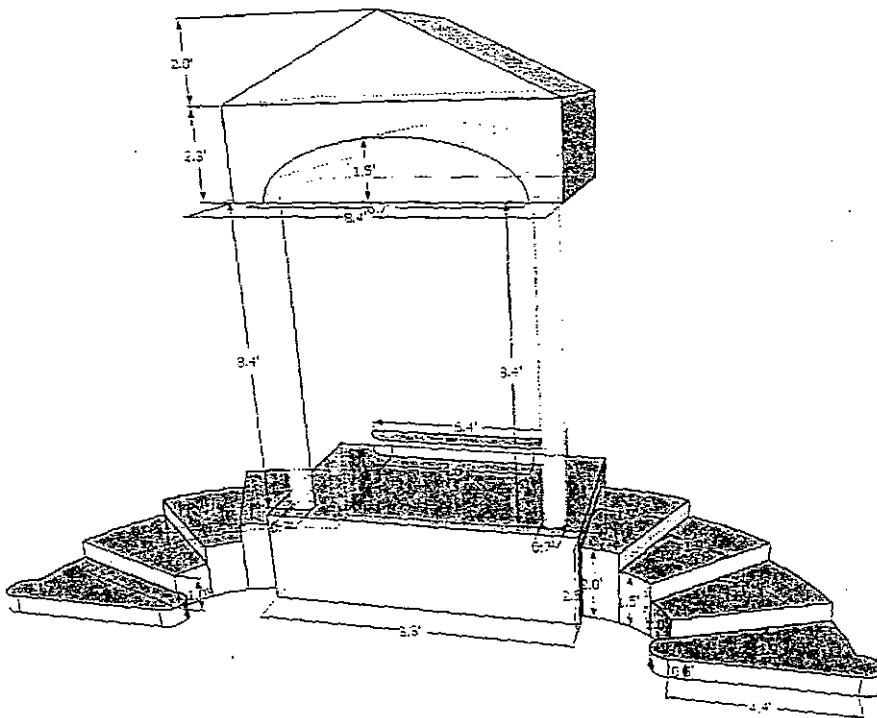


fig. 4.2- front entry
not to scale

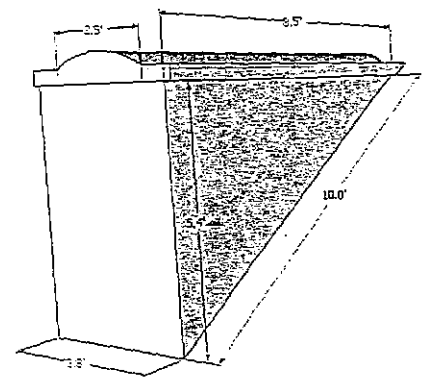


fig. 4.3- dormer 1
not to scale
(3 total)

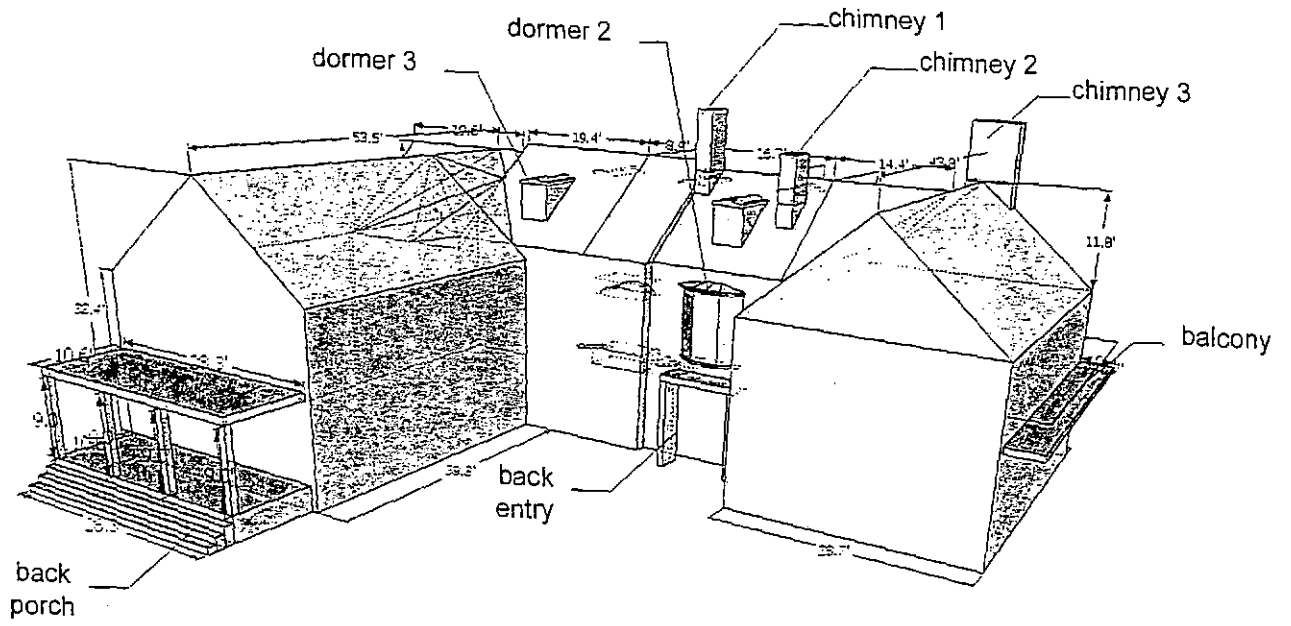


fig. 5.1- back massing
not to scale

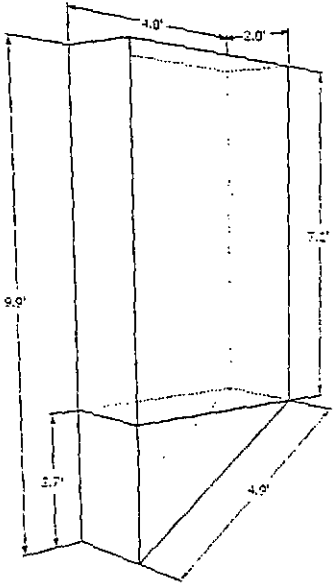


fig. 5.2- chimney 1
not to scale

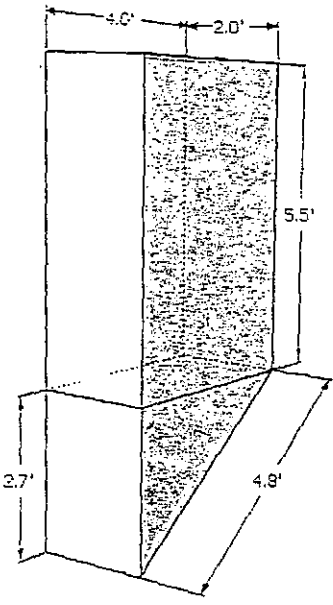


fig. 5.3- chimney 2
not to scale

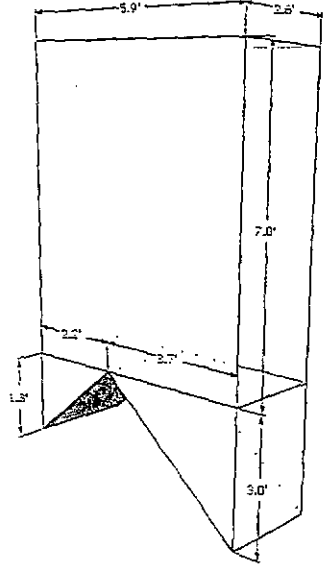


fig. 5.4- chimney 3
not to scale

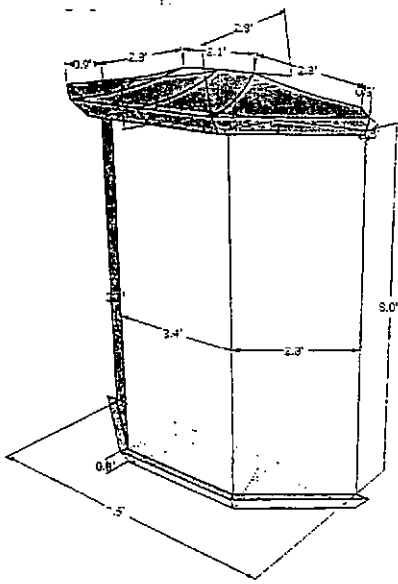


fig. 6.1- dormer 2
not to scale

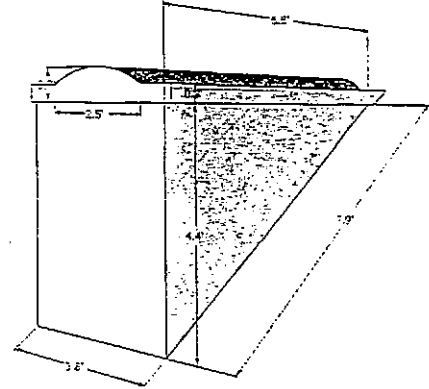


fig. 6.2- dormer 3
not to scale
(2 total)

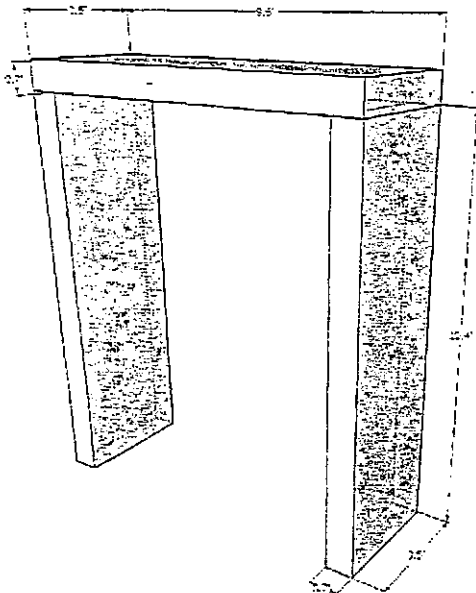


fig. 6.3- back entry
not to scale

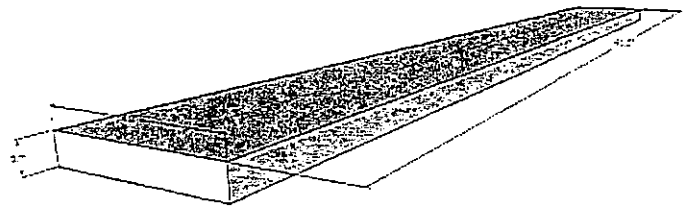


fig. 6.4- balcony
not to scale

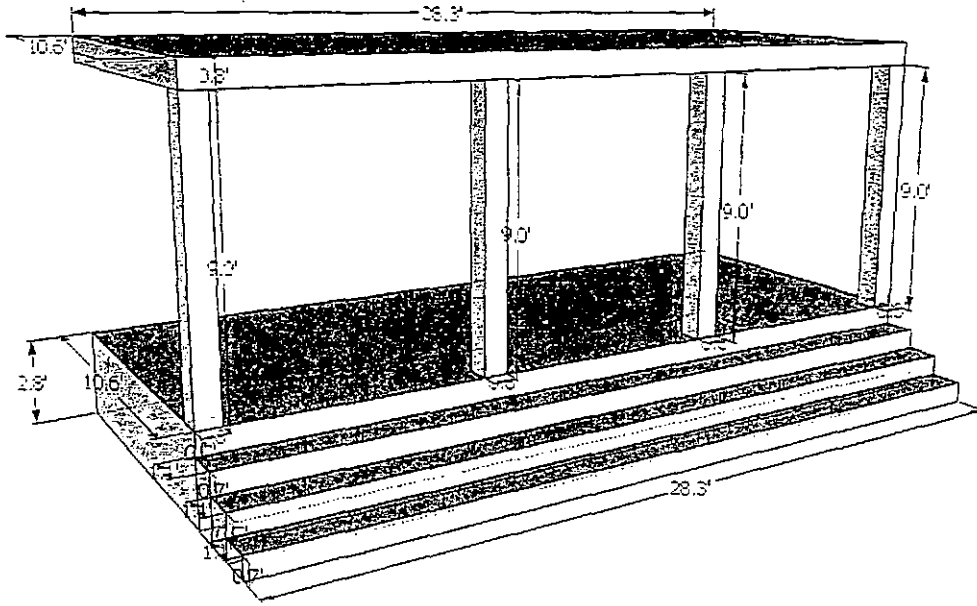


fig. 7.1- back porch
not to scale

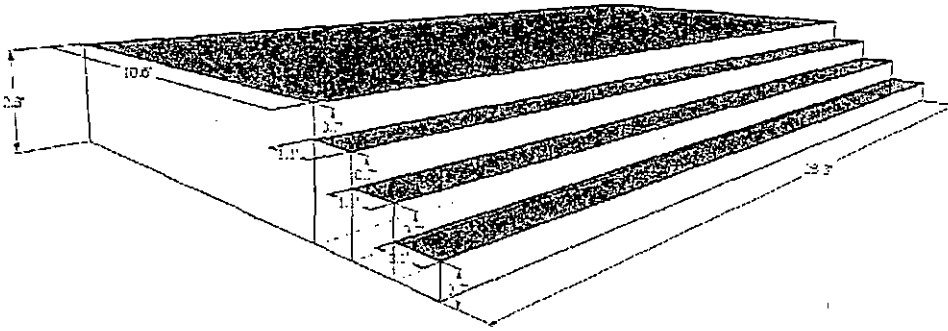


fig. 7.2- porch stairs
not to scale

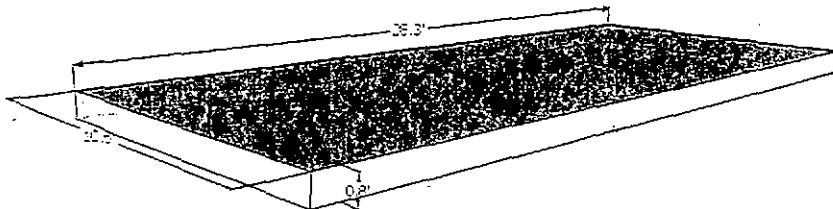


fig. 7.3- porch roof
not to scale

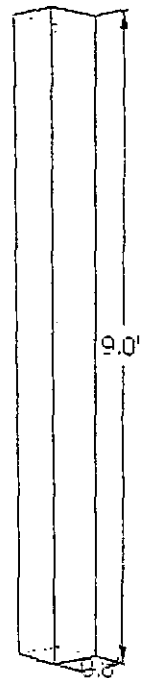


fig. 7.4- porch column
not to scale

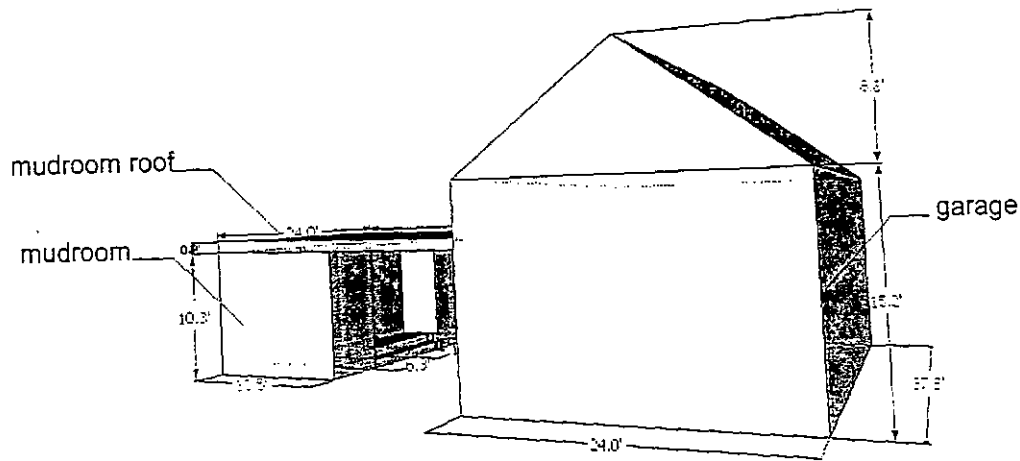


fig. 8.1- garage addition
not to scale

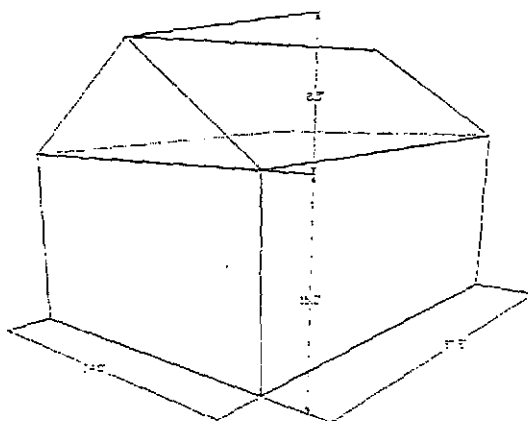


fig. 8.2- garage
not to scale

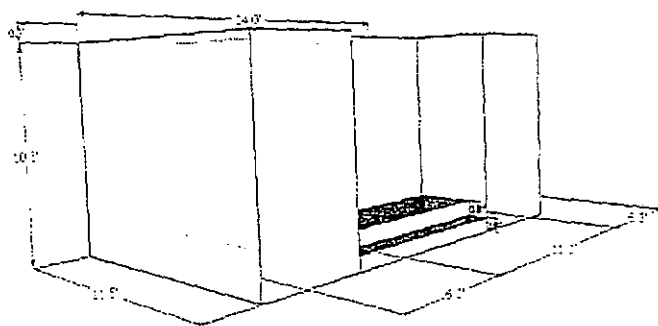


fig. 8.3- mudroom
not to scale

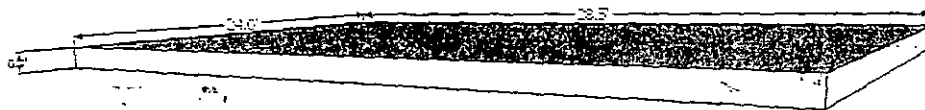


fig. 8.4- mudroom roof
not to scale